

OPEN SPACE TO WORK

# L30

## OFFICE



L30.OFFICE IS AN ADAPTATION OF 40FT HC SHIPPING CONTAINER

External dimensions: 2,44 x 12.19 x h 2,89 m, building area 29,8 m<sup>2</sup>.

Internal dimensions: 2,00 x 11.80 x h 2,45 m, gross internal (floor) area 23,9 m<sup>2</sup>.

Rooms: office 13 m<sup>2</sup>, meeting place 6,7 m<sup>2</sup>, bathroom 2,4 m<sup>2</sup>.

#### HEAD OFFICE

Flexicube Sp. z o.o.  
ul. Bonifraterska 17  
00-203 Warszawa  
www.flexicube.pl

#### CONTACT DETAILS

+48 506 526 399  
+48 786 809 909 (ENG)  
order@flexicube.pl

#### SHOWROOM

ul. Przyczółkowa 148  
02-962 Warszawa

## SCOPE OF CONTAINER CONVERSION TO PRACTICAL COMPLETION

# L30 OFFICE



### NEW SHIPPING CONTAINER (ONE WAY)

Conversion of shipping container is made of new container one way (shipping from manufacturer). We use 40HC and 20FT HC containers.



### CONTAINER CONSTRUCTION MODIFICATION

Cutting out and removing parts of the container steel wall, to prepare construction for windows and doors fitting. Prefabrication and high-quality welding. Precision and care for the high aesthetic of performed works.



### THERMAL INSULATION

The roof and walls are insulated with sprayed closed-cell polyurethane foam, 80-100 mm thick. Additionally, walls are insulated with mineral wool, 50 mm thick. Heat transfer coefficient  $U_{0,16-0,18} [W/(m^2 \cdot K)]$ . Floor insulation made with closed-cell polyurethane boards, 50 mm thick. Heat transfer coefficient  $U_{0,30} [W/(m^2 \cdot K)]$ .



### WINDOWS AND DOORS

The standard package of triple glazed windows with heat transfer coefficient  $U_g = 0,7 [W/(m^2 \cdot K)]$ . 5-chamber profile of window frames and sashes made of class A PCV. Possibility to use tempered, safe, burglar resistant or anti-solar glazing.



### ELECTRICAL INSTALLATION

Concealed conduit electrical wiring system and equipment (switchgear, sockets, connectors).



### PLUMBING SYSTEM

Concealed plumbing system, PP pipes joined with heat fusion welding, PVC sewer pipes. Water supply fittings and drainpipes concealed in the floor, connections outside the container.



### WALLS AND CEILING

Inner wooden-steel construction of walls and ceiling, plasterboard layer, finished with gypsum plaster, priming, and paint.



### EXTERNAL PAINTING

Container painted with hydrodynamic alkyd or polyurethane paint.

#### HEAD OFFICE

Flexicube Sp. z o.o.  
ul. Bonifraterska 17  
00-203 Warszawa  
www.flexicube.pl

#### CONTACT DETAILS

+48 506 526 399  
+48 786 809 909 (ENG)  
order@flexicube.pl

#### SHOWROOM

ul. Przyczółkowa 148  
02-962 Warszawa

## PRICE: EUR 31 600 NET

PRICE FOR PRACTICAL COMPLETION STAGE. POSSIBILITY OF REFITTING CONTAINER WITH ADDITIONAL COMPONENTS.

DELIVERY, UNLOADING AND ASSEMBLY ARE NOT INCLUDED IN THE PRICE.



# FLEXICUBE

Modified Shipping Containers®

## AVAILABLE OPTIONS OF ADDITIONAL EQUIPMENT

# L30 OFFICE



### BATHROOM

hot water boiler 30L, countertop (laminate), mirror, countertop washbasin, sink trap with click-clack plug, concealed tap, toilet bowl, sliding or non-rebated door, electric towel warmer/heater



### KITCHENETTE

kitchen cabinets IKEA KUNGSBACKA + METOD 120 cm, two-burner induction hob, fridge 91l, single-chamber sink, tap,



### RELAXATION SPACE

Ikea sofa



### ADDITIONAL INFORMATION

The building has insulation parameters at the level of a traditional single-family house. Our insulation ensures comfortable conditions of use.



### AIR CONDITIONING

5 kW Haier air conditioner with heating function



### FLOOR

vinyl panels,  
10cm MDF baseboard



### LIGHTING

indoor and outdoor LED

### HEAD OFFICE

Flexicube Sp. z o.o.  
ul. Bonifraterska 17  
00-203 Warszawa  
www.flexicube.pl

### CONTACT DETAILS

+48 506 526 399  
+48 786 809 909 (ENG)  
order@flexicube.pl

### SHOWROOM

ul. Przyczółkowa 148  
02-962 Warszawa



**FLEXICUBE**

Modified Shipping Containers®

PRICE LIST OF  
CONTAINER AND  
ADDITIONAL OPTIONS

**L30**  
**OFFICE**

	EUR net price
practical completion stage	31 600
floor panel LTV	1 800
kitchenette with household appliances	2 700
bathroom with equipment	3 300
interior door	800
A/C 5kW + heating pump	2 300
infrared floor heating	1 700
lighting	500

HEAD OFFICE  
Flexicube Sp. z o.o.  
ul. Bonifraterska 17  
00-203 Warszawa  
www.flexicube.pl

CONTACT DETAILS	SHOWROOM
+48 506 526 399	ul. Przyczółkowa 148
+48 786 809 909 (ENG)	02-962 Warszawa
order@flexicube.pl	

**PRICE: EUR 44 700 NET\*\***

\* \*\*THE PRICE INCLUDES THE BUILDING DESCRIBED IN THE OFFER WITH THE LISTED OPTIONAL ITEMS.  
DELIVERY, UNLOADING AND ASSEMBLY ARE NOT INCLUDED IN THE PRICE.





HEAD OFFICE

Flexicube Sp. z o.o.  
ul. Bonifraterska 17  
00-203 Warszawa  
[www.flexicube.pl](http://www.flexicube.pl)

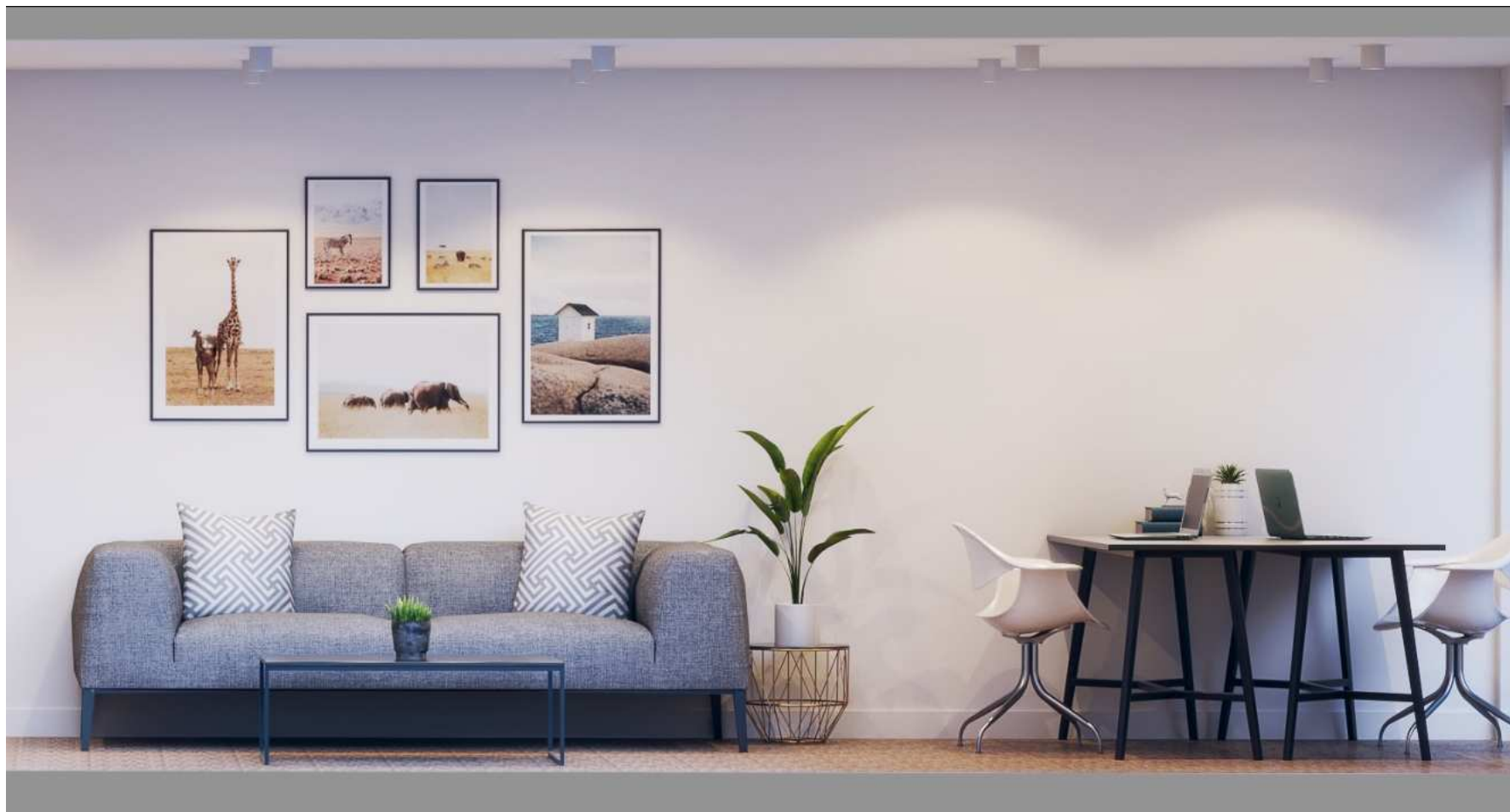
CONTACT DETAILS

+48 506 526 399  
+48 786 809 909 (ENG)  
[order@flexicube.pl](mailto:order@flexicube.pl)

SHOWROOM

ul. Przyczółkowa 148  
02-962 Warszawa





HEAD OFFICE

Flexicube Sp. z o.o.  
ul. Bonifraterska 17  
00-203 Warszawa  
[www.flexicube.pl](http://www.flexicube.pl)

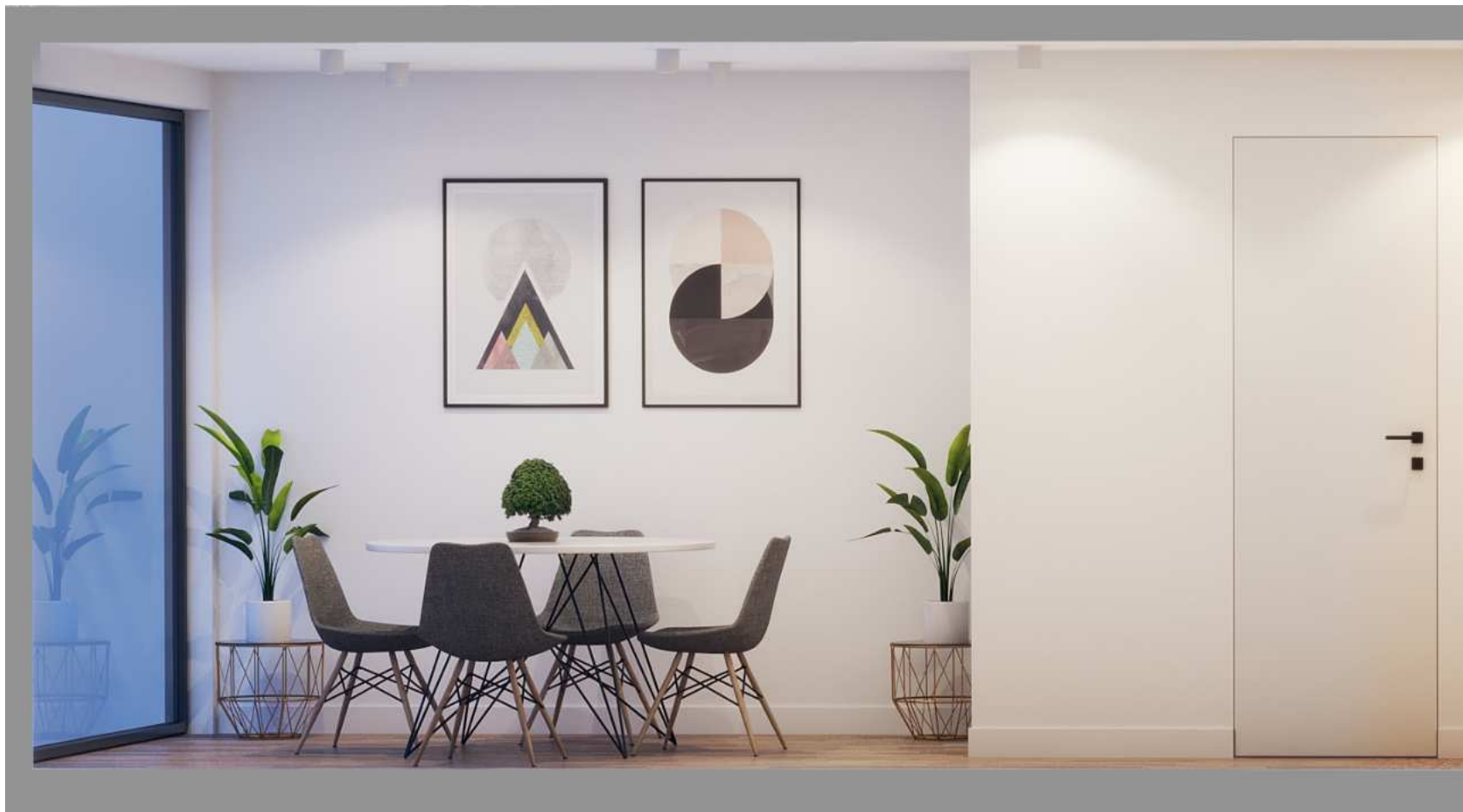
CONTACT DETAILS

+48 506 526 399  
+48 786 809 909 (ENG)  
[order@flexicube.pl](mailto:order@flexicube.pl)

SHOWROOM

ul. Przyczółkowa 148  
02-962 Warszawa





HEAD OFFICE

Flexicube Sp. z o.o.  
ul. Bonifraterska 17  
00-203 Warszawa  
[www.flexicube.pl](http://www.flexicube.pl)

CONTACT DETAILS

+48 506 526 399  
+48 786 809 909 (ENG)  
[order@flexicube.pl](mailto:order@flexicube.pl)

SHOWROOM

ul. Przyczółkowa 148  
02-962 Warszawa



