

**FLEXICUBE**

OPEN SPACE TO WORK

# L15XL barber



#### HEAD OFFICE

Flexicube Sp. z o.o.  
ul. Bonifraterska 17  
00-203 Warszawa  
www.flexicube.pl

#### CONTACT DETAILS

+48 506 526 399  
+48 786 809 909 (ENG)  
order@flexicube.pl

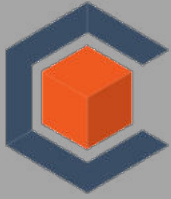
#### SHOWROOM

ul. Przechyłkowa 148  
02-962 Warszawa

L15XL BARBER IS AN ADAPTATION OF 20FT HC SHIPPING CONTAINER widened to 3m.

External dimensions: 3,00 x 6,06 x h 2,89 m, building area 18,18 m<sup>2</sup>.

Internal dimensions: 2,55 x 5.60 x h 2,45 m, gross internal (floor) area 14,28 m<sup>2</sup>.



# FLEXICUBE

# L15XL barber



#### NEW SHIPPING CONTAINER (ONE WAY)

Conversion of shipping container is made of new container one way (shipping from manufacturer). We use 40FT HC and 20FT HC containers.



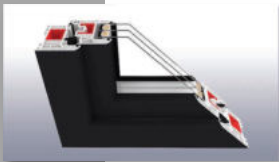
#### CONTAINER CONSTRUCTION MODIFICATION

Cutting out and removing parts of the container steel wall, to prepare construction for windows and doors fitting. Prefabrication and high-quality welding. Precision and care for the high aesthetic of performed works.



#### THERMAL INSULATION

The roof and walls are insulated with sprayed closed-cell polyurethane foam, 80-100 mm thick. Additionally, walls are insulated with mineral wool, 50 mm thick. Heat transfer coefficient  $U_{0,16-0,18}$  [W/(m<sup>2</sup>•K)]. Floor insulation made with closed-cell polyurethane boards, 50 mm thick. Heat transfer coefficient  $U_{0,30}$  [W/(m<sup>2</sup>•K)].



#### WINDOWS AND DOORS

The standard package of triple glazed windows with heat transfer coefficient  $U_g = 0,7$  [W/(m<sup>2</sup>•K)]. 5-chamber profile of window frames and sashes made of class A PCV. Possibility to use tempered, safe, burglar resistant or anti-solar glazing.



#### ELECTRICAL INSTALLATION

Concealed conduit electrical wiring system and equipment (switchgear, sockets, connectors).



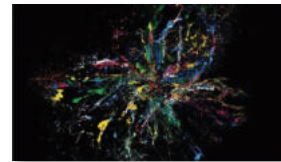
#### PLUMBING SYSTEM

Concealed plumbing system, PP pipes joined with heat fusion welding, PVC sewer pipes. Water supply fittings and drainpipes concealed in the floor, connections outside the container.



#### WALLS AND CEILING

Inner wooden-steel construction of walls and ceiling, plasterboard layer, finished with gypsum plaster, priming, and paint.



#### EXTERNAL PAINTING

Container painted with hydrodynamic alkyd or polyurethane paint.

#### HEAD OFFICE

Flexicube Sp. z o.o.  
ul. Bonifraterska 17  
00-203 Warszawa  
www.flexicube.pl

#### CONTACT DETAILS

+48 506 526 399  
+48 786 809 909 (ENG)  
order@flexicube.pl

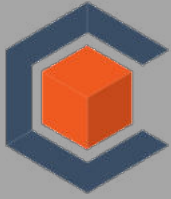
#### SHOWROOM

ul. Przechyłkowa 148  
02-962 Warszawa

## PRICE: EUR 25 600 NET

PRICE FOR PRACTICAL COMPLETION STAGE. POSSIBILITY OF REFITTING CONTAINER WITH ADDITIONAL COMPONENTS.

DELIVERY, UNLOADING AND ASSEMBLY ARE NOT INCLUDED IN THE PRICE.



# FLEXICUBE

# L15XL barber

## AVAILABLE OPTIONS OF ADDITIONAL EQUIPMENT



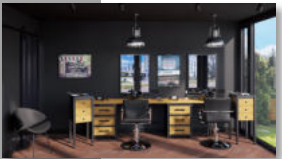
### BATHROOM

Hot water boiler 30L, cabinet with washbasin and built in tap, toilet bowl, electric towel heater



### AIR CONDITIONING

3.5 kW Haier air conditioner with heating function



### WORKING ROOM

Furniture at the Client's choice



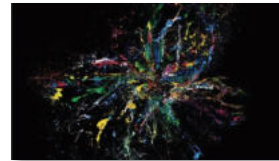
### FLOOR

vinyl panels,  
10cm MDF baseboard



### LIGHTING

indoor and outdoor LED



### ADDITIONAL INFORMATION

The building has insulation parameters at the level of a traditional single-family house. Our insulation ensures comfortable conditions of use.

### HEAD OFFICE

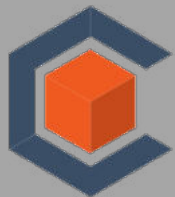
Flexicube Sp. z o.o.  
ul. Bonifraterska 17  
00-203 Warszawa  
www.flexicube.pl

### CONTACT DETAILS

+48 506 526 399  
+48 786 809 909 (ENG)  
order@flexicube.pl

### SHOWROOM

ul. Przychyłkowa 148  
02-962 Warszawa



**FLEXICUBE**

PRICE LIST OF  
CONTAINER AND  
ADDITIONAL OPTIONS

# L15XL barber

	EUR net price
practical completion stage	25 600
floor panel LTV	900
bathroom with equipment	4 200
interior door	1 600
A/C 3.5kW + heating pump	1 300
infrared floor heating	1 000
lighting	300

HEAD OFFICE

Flexicube Sp. z o.o.  
ul. Bonifraterska 17  
00-203 Warszawa  
www.flexicube.pl

CONTACT DETAILS

+48 506 526 399  
+48 786 809 909 (ENG)  
order@flexicube.pl

SHOWROOM

ul. Przychyłkowa 148  
02-962 Warszawa

**PRICE: EUR 34 900 NET\*\***

\*\*THE PRICE INCLUDES THE BUILDING DESCRIBED IN THE OFFER WITH THE LISTED OPTIONAL ITEMS.  
DELIVERY, UNLOADING AND ASSEMBLY ARE NOT INCLUDED IN THE PRICE.



**FLEXICUBE**

SPACE ARRANGEMENT

# L15XL barber



**HEAD OFFICE**

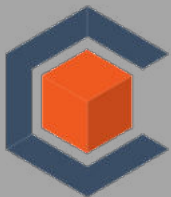
Flexicube Sp. z o.o.  
ul. Bonifraterska 17  
00-203 Warszawa  
www.flexicube.pl

**CONTACT DETAILS**

+48 506 526 399  
+48 786 809 909 (ENG)  
order@flexicube.pl

**SHOWROOM**

ul. Przyczółkowa 148  
02-962 Warszawa



**FLEXICUBE**

SPACE ARRANGEMENT

# L15XL barber



**HEAD OFFICE**

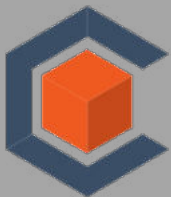
Flexicube Sp. z o.o.  
ul. Bonifraterska 17  
00-203 Warszawa  
www.flexicube.pl

**CONTACT DETAILS**

+48 506 526 399  
+48 786 809 909 (ENG)  
order@flexicube.pl

**SHOWROOM**

ul. Przczyłkowska 148  
02-962 Warszawa



**FLEXICUBE**

SPACE ARRANGEMENT

# L15XL barber



**HEAD OFFICE**

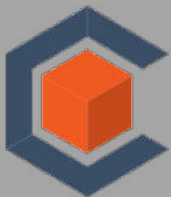
Flexicube Sp. z o.o.  
ul. Bonifraterska 17  
00-203 Warszawa  
www.flexicube.pl

**CONTACT DETAILS**

+48 506 526 399  
+48 786 809 909 (ENG)  
order@flexicube.pl

**SHOWROOM**

ul. Przyczółkowa 148  
02-962 Warszawa



**FLEXICUBE**

SPACE ARRANGEMENT

# L15XL barber



**HEAD OFFICE**

Flexicube Sp. z o.o.  
ul. Bonifraterska 17  
00-203 Warszawa  
www.flexicube.pl

**CONTACT DETAILS**

+48 506 526 399  
+48 786 809 909 (ENG)  
order@flexicube.pl

**SHOWROOM**

ul. Przczyłkowska 148  
02-962 Warszawa